



# TITAN DOOR SYSTEMS

---

Opening Doorways for Australia



Series3000  
Aluminum  
Doors

# Series3000 Aluminum Doors

Luxury - Elegance - Durability

---

This counterweight balance door makes a spectacular statement. Designed in a contemporary concept, it promises durability, elegance, and sheer luxury. With no visible welding, this all-aluminum door is an example of an exemplary architectural framework.

Series3000 Aluminum door is ideal for high-end architectural projects and designed to withstand harsh and corrosive environments, these doors come with stainless-steel pulleys and hinges as standard. Each door is constructed from custom-extruded aluminum sections and purpose-designed to accept standard glazing. The joints are crimped together using triple stakes on the corners and purpose-made joining spigots to the internal members. The doors incorporate a brake mechanism in the event of a cable failure. It features an innovative design and anti-fall brake feature.



## Standard Specifications:

Maximum width – 4.5 metres.

Maximum height – 4 metres.

Consult for custom larger sizes.

## Applications:

The Series3000 Aluminum folding door is designed to suit many high-end architectural commercial and industrial projects including:

- Garage and showrooms
- Function spaces
- Warehouses
- Transport depots



## Finish

- Standard: anodised, powder-coated or glazed.

## Specifications

- The doors are available in powder coat and standard anodized finishes.
- Doors can be fully or partially glazed in accordance with the regulatory standards.
- Standard glazing uses 6.38mm laminated safety glass.
- The doors are motorized and will not be equipped with manual locks unless specified.
- Counterweights will be enclosed within a removable pressed sheet for meeting the design requirements and for added protection.
- The doors shall be driven by the exclusive patented 24 volt DC motor. The motors are controlled by custom logic control.
- There are various options for door operation available including the card key, radio transmitter, and key switch. The doors are equipped with automatic load sensing for obstruction detection.
- Counterweight Covers - The counterweights shall be protected and covered with a removable pressed sheet to meet design requirements.

## Features

- The doorframe is constructed from a custom extruded aluminum section.
- The joints are not welded. They are instead crimped together with triple stakes on corners for ensuring a sturdy, welding-free construction.
- There is no discoloration of anodized finishes from heat due to welding.
- The anti-fall brake feature is innovative in design and has undergone rigorous in-house testing.

D = Depth N = Width

STEEL																		
A	Width (m)	3	4	5	6	7	8	9	10	11	12	13	14	15	16	17	18	19
T	Thickness (mm)	210	240	260	260	310	320	350	400	420	420	465	465	465	515	515	565	565
T Dimensions allow for 25 Cladding Depth																		
P	Pulley HR (mm)	200	200	250	260	260	300	300	300	380	380	380	380	380	380	400	400	400
P	Minimum headroom 450 required for motorisation																	

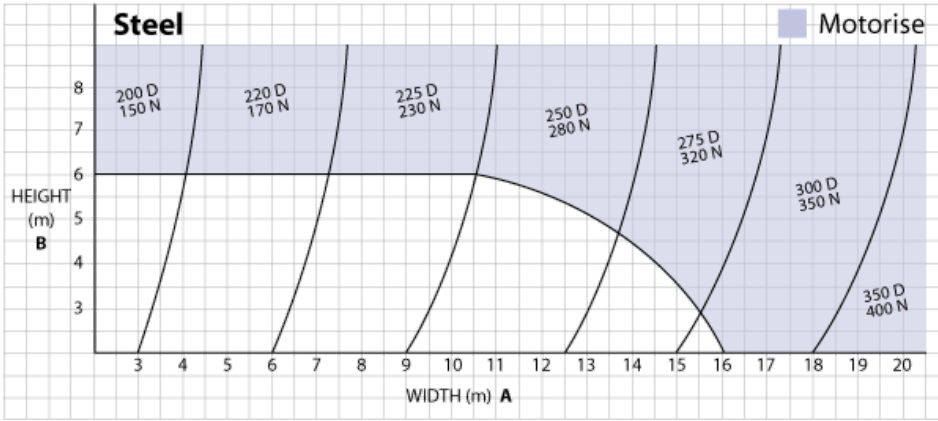
### Series 3000 tech 9 table

D = Depth N = Width

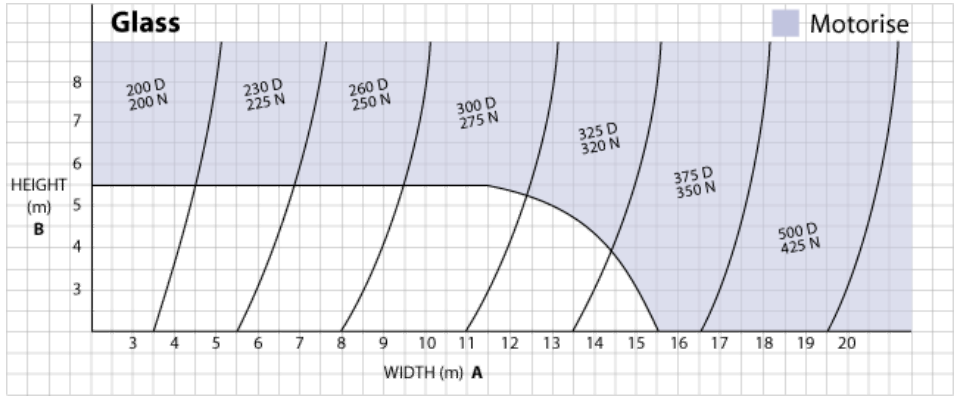
GLASS																		
A	Width (m)	3	4	5	6	7	8	9	10	11	12	13	14	15	16	17	18	19
T	Thickness (mm)	230	250	270	310	320	350	400	420	420	465	465	485	515	515	565	565	600
T Dimensions allow for 25 deep glazing beads																		
P	Pulley HR (mm)	200	250	250	260	260	300	300	300	380	380	380	380	380	400	400	400	400
P	Minimum headroom 450 required for motorisation																	

Renlita Overhead Doors has a continuous program of product development and reserves the right to change specifications at any time without notice.

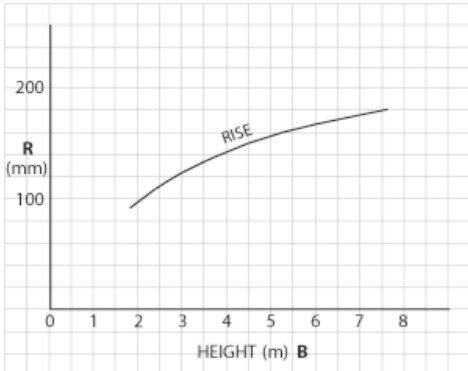
### Series 3000 tech 10 table



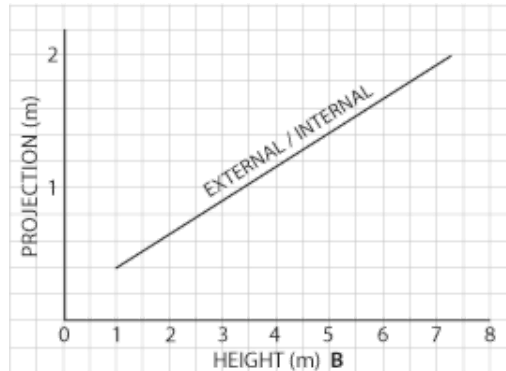
### Series 3000 tech 9



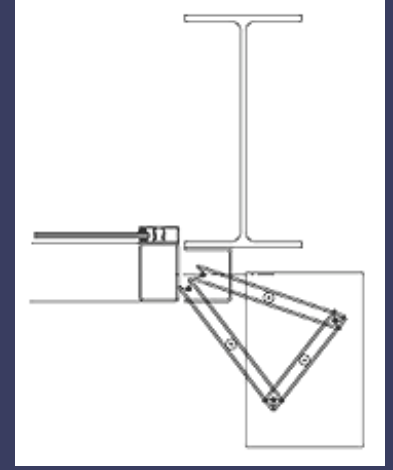
### Series 3000 tech 10



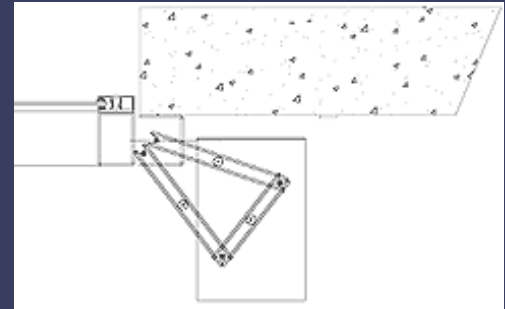
### Series 3000 rise



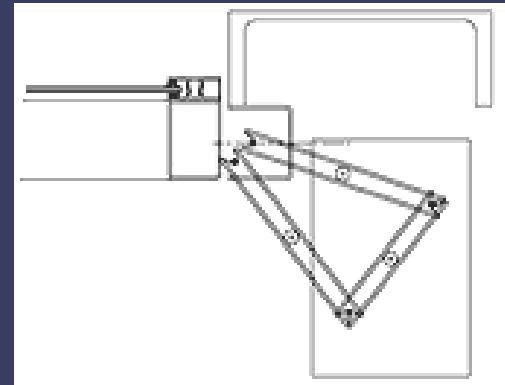
### Series 3000 projection



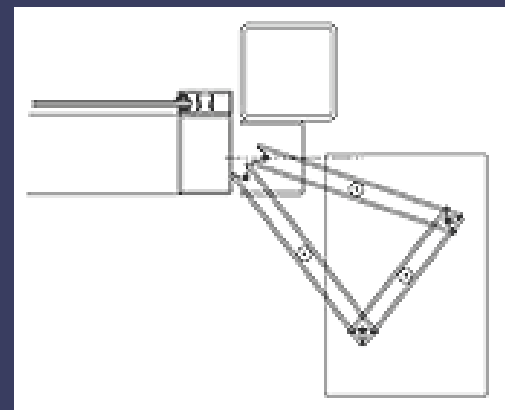
Series 3000 jamb detail steel rsj



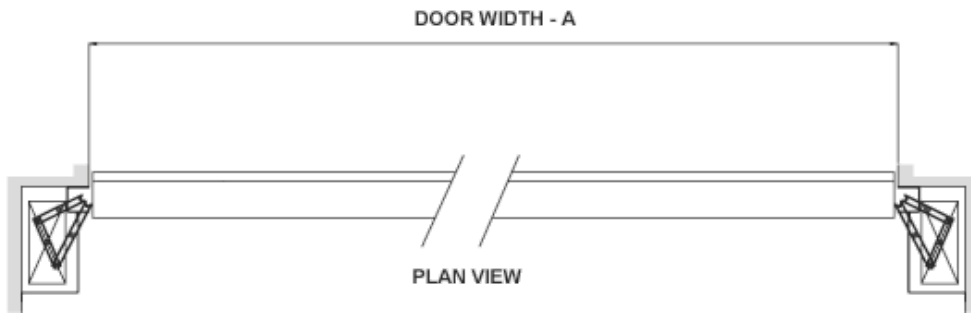
Series 3000 jamb detail concrete brick



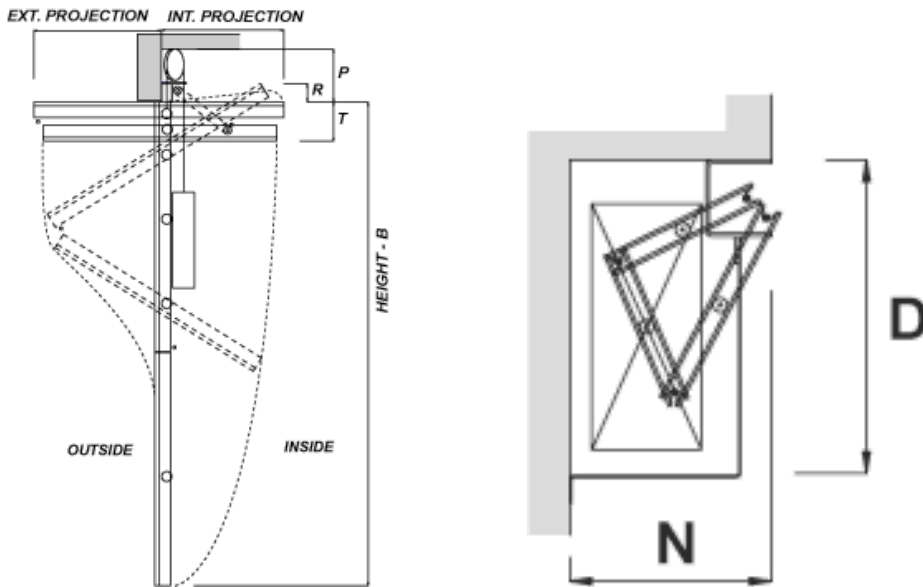
Series 3000 jamb detail steel pfc



Series 3000 jamb detail steel rhs

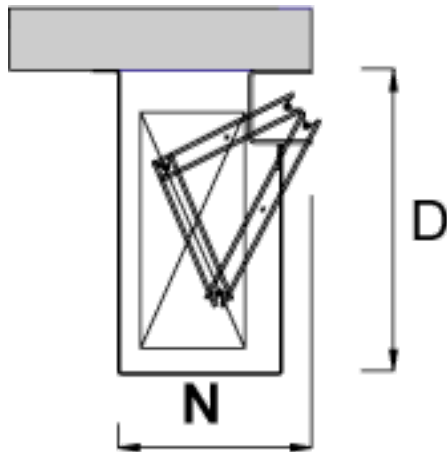


Series 3000 door width



Series 3000 int/ext projection

Series 3000 wall return fix




Series 3000 straight wall fix

# Series 3000 Foldaway Door

## Contact Us

 PO Box 828, Moonee Ponds 3039

 [info@TITANdoorsystems.com.au](mailto:info@TITANdoorsystems.com.au)

 Phone: (03) 9034 6047

Visit our website for full range

 [www.titanddoorsystems.com.au](http://www.titanddoorsystems.com.au)