



TITAN DOOR SYSTEMS

Opening Doorways for Australia



Series 3
Aluminum
Roller
Shutters

SERIES 3

ALLUMINIUM ROLLER SHUTTERS

Aesthetic - Sturdy - Secured

Series 3 Aluminum Roller Shutters is made from high-quality extruded aluminum, the shutters offer exceptional security while also enhancing the aesthetic appeal of your establishment.

This roller shutter is versatile enough to complement various sized apertures and can be customised and manufactured in many different design to suit your design brief. It features a motorized lock mechanism. But if you needed, we can also attach the two-point locking system, which can be keyed from inside of outside.

The roller shutters are also available in two-finishes - powdercoated and anodized. You can select one as per the interiors and exteriors of your establishment to further boost the aesthetics.

We also offer perforation panels if you want more airflow through the shutter. If you also wish protection against dust, the shutters can be intalled with clear acrylic panels.

Standard Specifications:

Opening size:

- 10m Wide
- 6m High

Applications

Suitable for many commercial applications including:

- Shopping Centres, Bar Tops, Counter Tops, Shopfronts, Doorways, Bottle Shops, Sports Complexes, Arcades, Clubs, Carparks, Ventilation Security, Delivery Docks.





Specifications

- **Curtain** - Constructed from extruded aluminium slats with a facedepth of 90mm x 1.6mm. Nylon end clips are fitted to prevent lateral movement and supply smooth operation. Optional perforations of 6mm holes at 9mm centres, slotting of 160mm x 60mm or 600mm x 60mm are available. Clear acrylic panels can be fitted behind the perforation/slotting for a dust seal. Perforated slats offer approximately 32% free air flow. Slotted slats offer approximately 50% free air flow.
- **Side Guide** - 103mm x 41mm extruded aluminium with schlegal nylofelt buffer for quiet operation.
- **Locking** - Doors are generally motorised, but can be fitted with standard two point locking.
- **Bottom Rail** - Extruded aluminium box section manufactured to interlock with the curtain. Bottom rail can be fitted with a PVC seal.
- **Brackets** - Manufactured from 10mm mild steel.
- **Roller Drum** - Manufactured from 165mm or 219mm seamless tube attached to self lubricating bearings rotating on a 35mm steel shaft. The shaft shall be fitted with helical springs designed to counterbalance the curtain weight throughout its operation. The drum shall be designed to give minimum deflection over the span.
- **Operation** - Normally motorised with 3 phase motor and gearbox fitted with built in limit switched. Doors can be remote controlled to customer requirements.

Finish

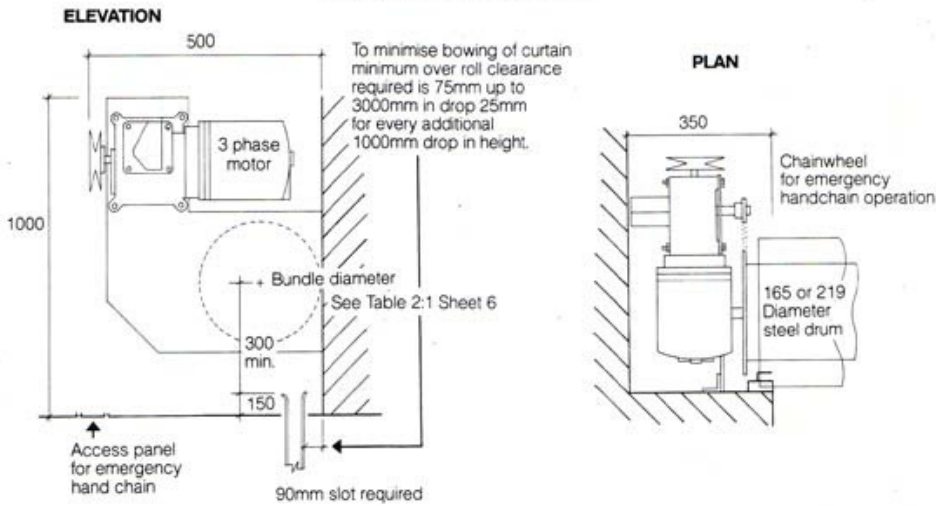
- Available in anodised and powdercoated colours.
- For typical installation details, please refer to ISoor.

Features

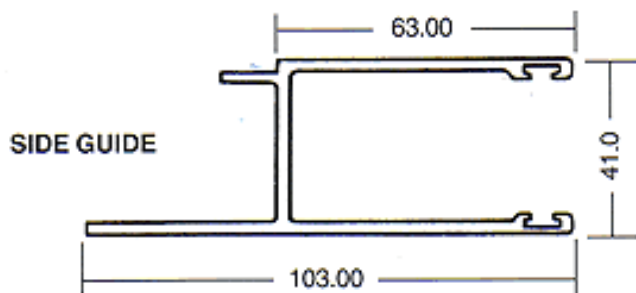
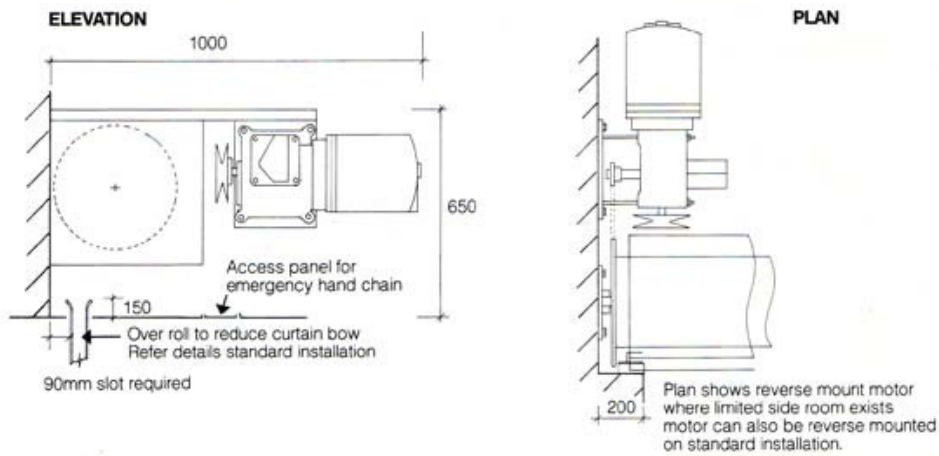
- Aluminum roller shutters for the ultimate in security
- Aesthetically designed to help boost the appearance of your establishment
- Available in custom sizes and colors
- Option to install perforations and/or acrylic panels
- Motorized lock mechanism with the option to install a two-way locking system

Installation Details and Side Guide

STANDARD INSTALLATION



INSTALLATION FOR LIMITED HEADROOM OR SIDEROOM



Contact Us

📍 PO Box 828, Moonee Ponds 3039

✉ info@TITANdoorsystems.com.au

☎ Phone: (03) 9034 6047

Visit our website for full range

🌐 www.titanddoorsystems.com.au