



TITAN DOOR SYSTEMS

Opening Doorways for Australia



SERIES 3000
FOLD-AWAY
DOOR

Re

SERIES 3000

FOLDAWAY DOOR

Stylish - Versatile - Strong

The foldaway counterweight balanced door is a bold and innovative, with its sleek, immersive design immediately catching the eye. It spans up to 30m to make an outstanding statement. With the capacity to accept a wide variety of sizes, claddings and glazing patterns, they have the potential to radically showcase your building. Commercial, residential, and industrial applications are suitable for this door, which operates in a range of environments from warehouses to showrooms, fire stations to transport depots, and many more. A two-leafed folding overhead door, its horizontal hinging system ascends and stacks beneath the lintel.



Standard Specifications

Operation Size:

Maximum width – 30 M
Maximum height – 8 M

SAFETY SYSTEM

Anti-Fall Brake

We have incorporated a new safety feature to the Counterweight door range. Through innovative design and extensive in-house testing, we have developed and patented the Anti-fall brake. Our Counterweight doors are designed with a safety factor of 6 to 1 and the new Anti-fall brake increases this measure by incorporating a brake mechanism in the event of a cable failure.



OPTIONAL EXTRAS

Escape & Access Doors

Can be incorporated into door design providing bottom leaf height is sufficient. Locking is by a night latch unless otherwise specified. It is recommended that access doors open inward on a Series 3000 door.

Motorisation

Operation by a ramp and carriage designed for smooth opening and closing. The carriage is driven by an overhead shaft connected to a three or single phase drive unit incorporating open and close limit switches. Doors may be electronically operated and fitted with sophisticated control systems as required. Advise whether doors to be designed for future electric operation.

Specifications

- When Designing an Opening - Ensure the opening is plumb and true. There should be sufficient room at the front and rear of the opening for projection, as well as adequate pulley and nib room.
- Standard Design - Doors are constructed from rectangular hollow steel sections and suitably braced for minimum deflection in the open and closed position. The standard design is based on 0.5 kPa wind load. This may be altered to suit particular situations. Thus the desired wind load must be stated, when specifying this product.
- Cladding (Glass) - Doors can be partially or fully glazed for viewing or showroom display and are glazed in accordance with AS1288. Standard glazing uses 6.38mm laminated safety glass. The use of other glass or glazing material should be referred to the manufacturer due to additional weight, deflection, door design and construction. Glazed doors will generally incorporate a kickplate in the base of the bottom leaf. Door size and weight will determine kickplate height.



- Cladding (Steel) - Doors can be clad with various sheeting materials. Standard Colourbond profiles are commonly used, however specialised profiles can be used. Please consult the manufacturer on the use of non standard sections. Bar Grille - This door is constructed of standard RHS frame covered with 20mm square hollow steel tube welded vertically over the entire door face at approximately 120mm centers.
- Other Cladding - Other available cladding commonly used are plywood, mesh, perforated sheet, woven wire and galvanized sheet.
- Finishes - Standard finish on frames and channels is epoxy primed and polyurethane. On glazed doors beading can be anodised or powdercoat finish. Other finishes are available if required, please specify.
- Locking - By use of internal padbolts unless otherwise specified. Motorised doors will not be fitted with locks.
- Counterweight Covers - The counterweights shall be protected and covered with a removable pressed sheet to meet design requirements.

Features

- Precision engineering ensures each door meets individual requirements for counterweight balancing, fitting with minimal internal projection and placing safety as a priority. Headroom is not an issue, and glazing/cladding materials are versatile based on desired style.
- Doors fold along central hinge, ascending to a horizontal configuration beneath the lintel. Dimensions are tailored to individual requirements, while a minimum wind loading of 0.5kPa is in operation.
- Safety and security are prime features of this door.

Applications

Suitable for any applications including: Shopping Centres, Bar Tops, Counter Tops, Shopfronts, Doorways, Sports Complexes, Arcades, Clubs, Gyms and Restaurants.

D = Depth N = Width

STEEL																		
A	Width (m)	3	4	5	6	7	8	9	10	11	12	13	14	15	16	17	18	19
T	Thickness (mm)	210	240	260	260	310	320	350	400	420	420	465	465	465	515	515	565	565
T Dimensions allow for 25 Cladding Depth																		
P	Pulley HR (mm)	200	200	250	260	260	300	300	300	380	380	380	380	380	380	400	400	400
P	Minimum headroom 450 required for motorisation																	

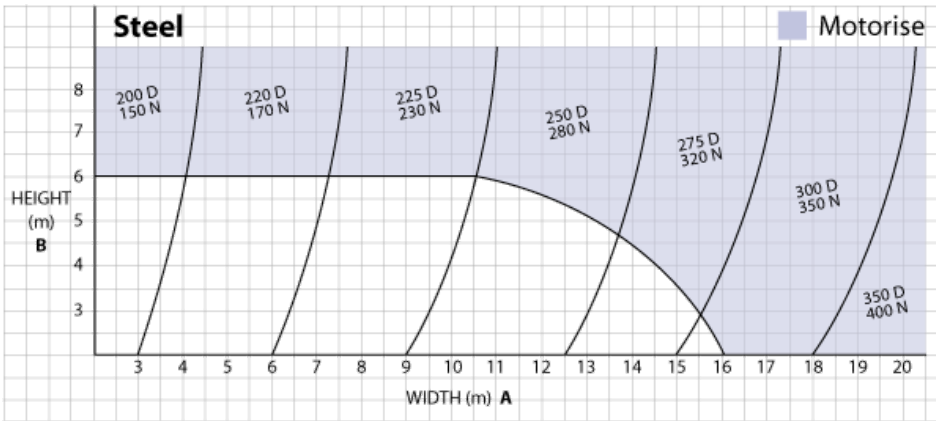
Series 3000 tech 9 table

D = Depth N = Width

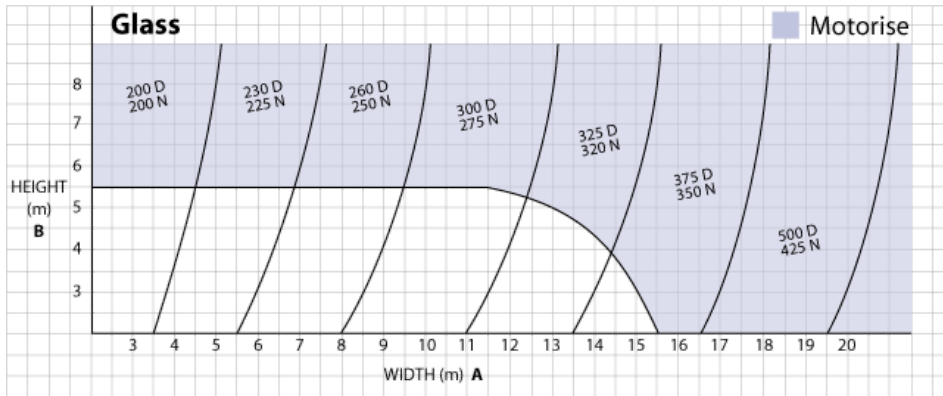
GLASS																		
A	Width (m)	3	4	5	6	7	8	9	10	11	12	13	14	15	16	17	18	19
T	Thickness (mm)	230	250	270	310	320	350	400	420	420	465	465	485	515	515	565	565	600
T Dimensions allow for 25 deep glazing beads																		
P	Pulley HR (mm)	200	250	250	260	260	300	300	300	380	380	380	380	380	400	400	400	400
P	Minimum headroom 450 required for motorisation																	

Renlita Overhead Doors has a continuous program of product development and reserves the right to change specifications at any time without notice.

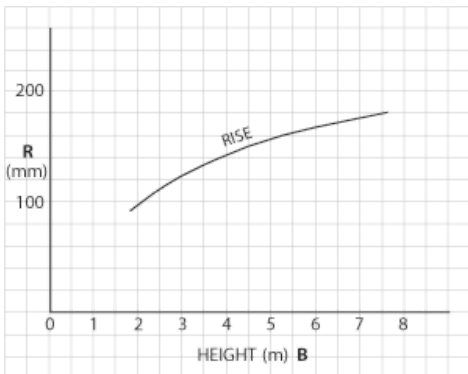
Series 3000 tech 10 table



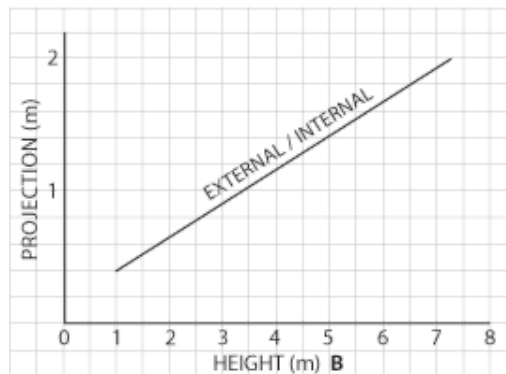
Series 3000 tech 9



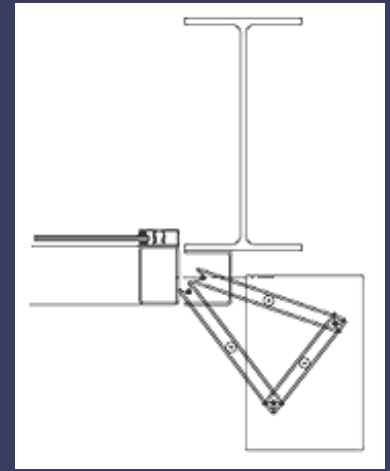
Series 3000 tech 10



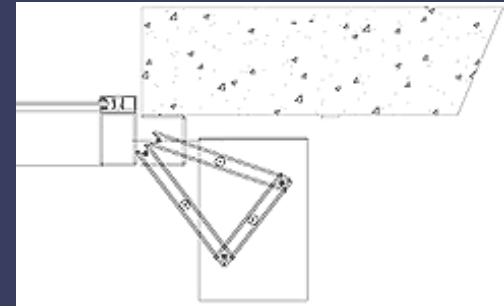
Series 3000 rise



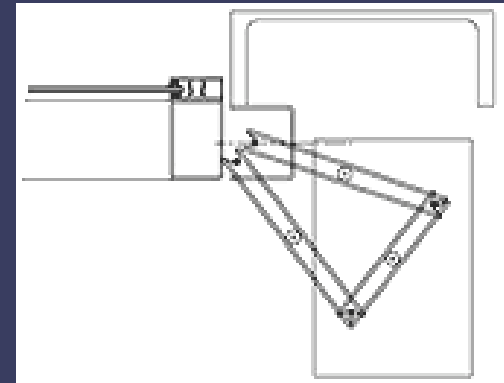
Series 3000 projection



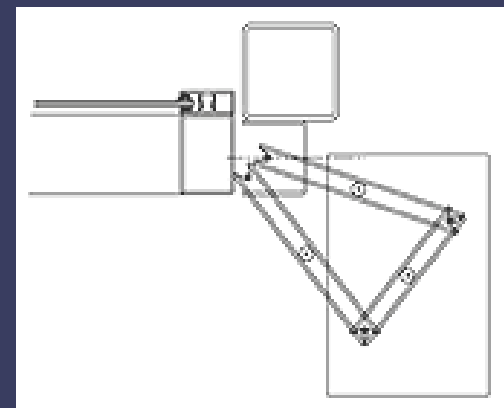
Series 3000 jamb detail steel rsj



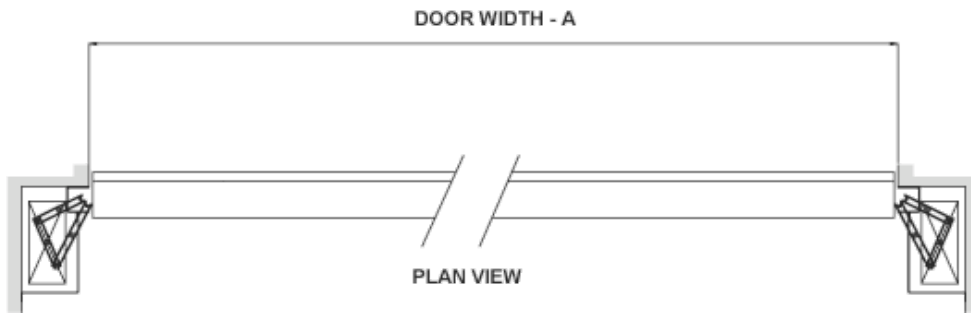
Series 3000 jamb detail concrete brick



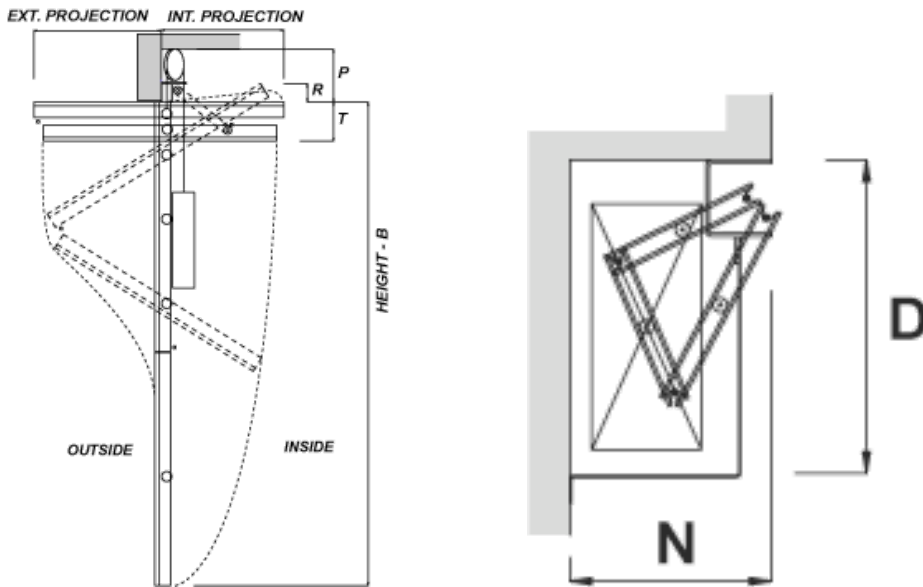
Series 3000 jamb detail steel pfc



Series 3000 jamb detail steel rhs

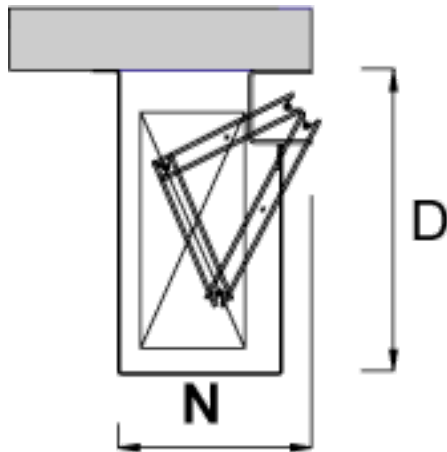


Series 3000 door width



Series 3000 int/ext projection

Series 3000 wall return fix




Series 3000 straight wall fix

Series 3000 Foldaway Door

Contact Us

 PO Box 828, Moonee Ponds 3039

 info@TITANdoorsystems.com.au

 Phone: (03) 9034 6047

Visit our website for full range

 www.titanddoorsystems.com.au