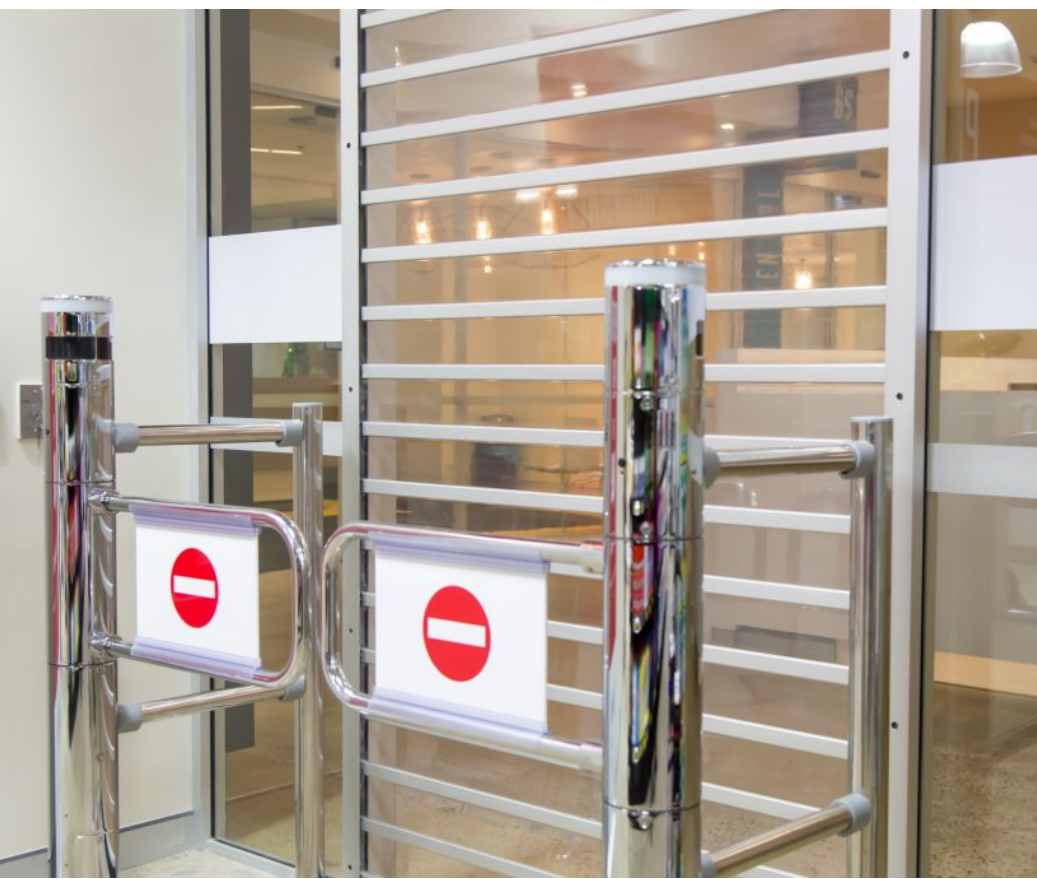




TITAN DOOR SYSTEMS

Opening Doorways for Australia



Clearspan
Roller
Shutters

Clearspan Roller Shutters

Aesthetic - Versatile - Modern

The Clearspan design has become known in the last few years for commercial application. The design's ability to offer a dynamic combination of security and aesthetics is what makes it one of a kind.

Clearspan Shutters let your after-hour display add dimension to your product range and take advantage of every marketing opportunity. We offer our Clearspan Shutters in custom sizes to effectively meet a host of commercial requirements.

Apart from protection from the outsiders and theft, the shutters also offer a significant level of protection against vermin. The shutters feature a centrally mounted locking mechanism, inside the bottom rail with the option from Sliding Shoot Bolt and Mortice Key Lock.



Standard Specifications

Opening sizes:
Up to 3.6m high x 3.0m wide.

Operation

All doors are counterbalanced per manual operation and motorisation is optional. This is recommended for wide and/or high openings.

Applications

Suitable for many commercial applications including: Shopping Centres, Bar Tops, Counter Tops, Shopfronts, Doorways, Bottle Shops, Sports Complexes, Arcades, Clubs.



Specifications

- **Curtain** - Constructed of clear polycarbonate extrusions having a depth of 100mm interlocking with symmetrical aluminium extruded members of 30mm to form a continuous hinge. Each aluminium member shall be fitted with moulded end clips to prevent lateral movement and provide smooth operation of side guides.
- **Side Guide** - 50mm x 33mm extruded aluminium with false back for concealing fixings. Optional Nylofelt Buffer available.
- **Locking** - Shall be centrally mounted two way Mortice Key Lock or Sliding Shoot Bolt Lock mounted within the bottom rail.
- **Bottom Rail** - 90mm x 48mm extruded aluminium section incorporating locking device and concealed locking rods and optional PVC Buffer.

Finish

- Available in anodised and powdercoated colours.
- For typical installation, please refer IS001.

Features

- Clearspan design offers a seamless view of products from outside the shutter
- Complete protection against theft
- Protects your merchandise against vermin
- Available in custom sizes
- Central locking system for absolute security



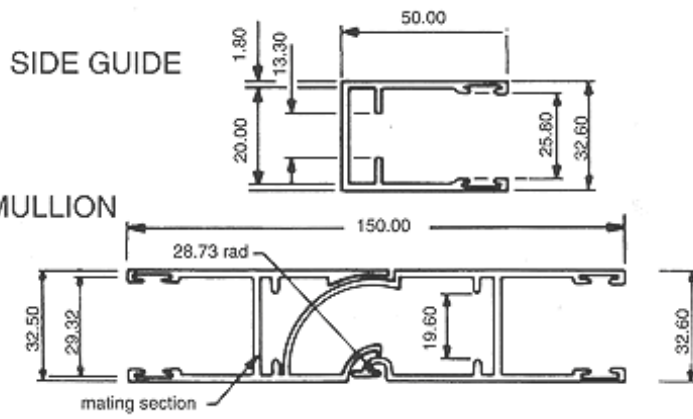
Bundle Diameters for Clearspan Polycarbonate Shutter

Specifications

- Brackets - Manufactured from 90mm x 40mm mild steel.
- Roller Drum - Manufactured from 229mm spiral ducted tube attached to ball bearing drum wheels rotating on a 34mm steel shaft. The shaft shall be fitted with helical springs designed to counterbalance the curtain weight throughout its operation. The drum shall be designed to give minimum deflection over the span.
- Mullions - Specially designed one piece extrusion for straight openings and two piece sections that can be set to any angle and shall be used for wide openings and multiple door installations. Mullions shall be lift out type with shoot bolts to base. Special wide mullions fabricated from aluminium sheet shall be used when two doors meet at an acute angle and no headroom exists for different mounting heights of doors (stacking).

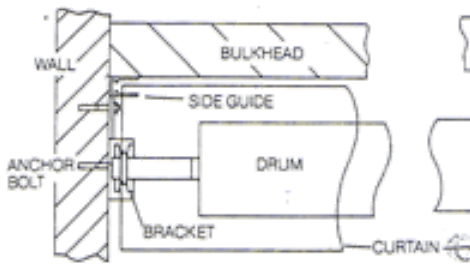
	219mm
Drop	Drum
1200	290
1500	300
1800	300
2100	325
2400	330
2700	330
3000	335
3300	340
3600	365

Clearspan Roller Shutters

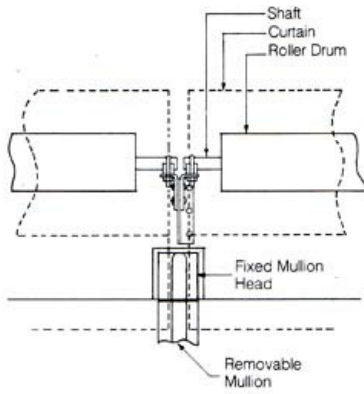
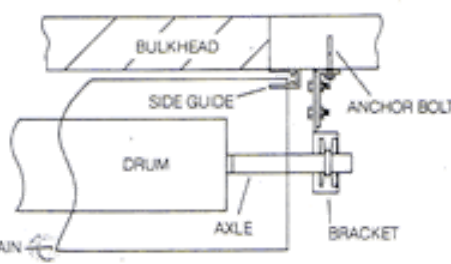


STANDARD INSTALLATION DETAILS

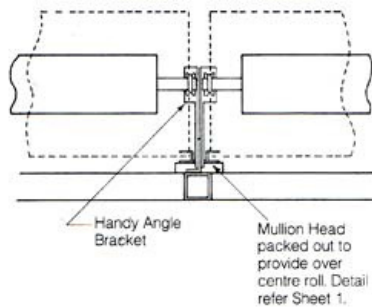
OUTSIDE JAMB FIXING



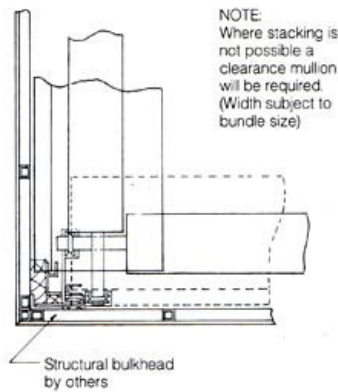
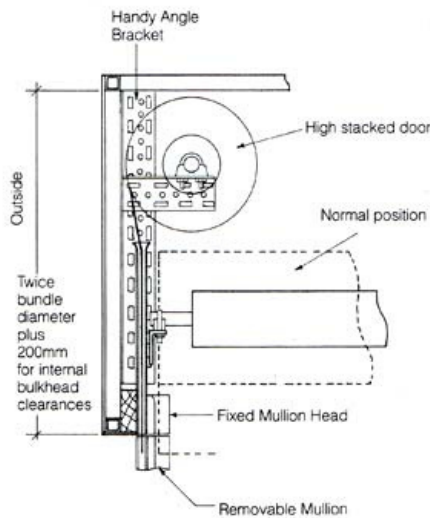
INSIDE JAMB FIXING



MULLION DETAILS



135° & 90° MULLION DETAILS



Contact Us



PO Box 828, Moonee Ponds 3039



info@TITANdoorsystems.com.au



Phone: (03) 9034 6047

Visit our website for full range



www.titanddoorsystems.com.au